



## Unisex-Langarmshirt

Normale Passform

XXS > 3XL

180 GSM

### Einzelheiten

- Set-In-Ärmel
- 1x1 Rippstrick am Halskragen
- Doppelnaht-Steppstich an Ärmelbündchen und Saum
- Innenliegendes Nackenband aus Eigenstoff

### Zusammensetzung

Shell - Singlejersey  
100% gekämmte ringgesponnene Bio-Baumwolle - 180 GSM  
Vorgewaschen

### Pflege

Wash similar colours together, no ironing on print, wash and iron inside out.



### Herkunftsland

Weaving : Bangladesh  
Dyeing : Bangladesh  
Assembly : Bangladesh



Original  
Certified by Control Union  
© 2022 Stanley



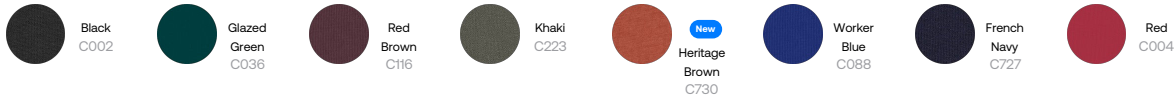
www.oeko-tex.com



Whites



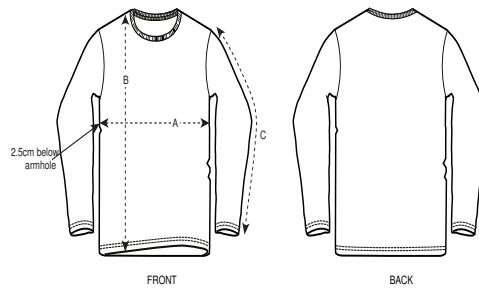
Colors



Essential Heathers



Größenführer



| Sizes |               | XXS  | XS   | S    | M    | L    | XL   | XXL  | 3XL  |
|-------|---------------|------|------|------|------|------|------|------|------|
| A     | Half Chest    | 45.5 | 47.5 | 49.5 | 53.5 | 56.5 | 59.5 | 63.5 | 67.5 |
| B     | Body Length   | 62   | 65   | 69   | 73   | 75   | 77   | 79   | 81   |
| C     | Sleeve Length | 60.5 | 61.5 | 63   | 64.5 | 65   | 65.5 | 66   | 66.5 |

Verpackung

| Sizes |            | XXS | XS | S  | M  | L  | XL | XXL | 3XL |
|-------|------------|-----|----|----|----|----|----|-----|-----|
|       | Pieces/bag | 5   | 5  | 5  | 5  | 5  | 5  | 5   | 5   |
|       | Pieces/box | 25  | 50 | 50 | 50 | 50 | 50 | 50  | 25  |